



XP

Operator Manual

STARLINE

STARLINE®
PROFESSIONAL WASH SYSTEMS



WARNING

Before installation and commissioning, you must read the safety instructions and warnings carefully and all the warning labels attached to the equipment.



IMPORTANT

Failure to comply (even partially) with the instructions given in this manual will invalidate the product warranty and relieves the manufacturer of any responsibility



IMPORTANT

The alteration of machine operation, design or the replacement of parts not approved by the manufacturer may void warranties and approvals.

CONTENTS

Safety Instructions.....3

Installation.....4

Installation Diagram.....5

Operating Procedures.....6

Troubleshooting.....8

Schematic Diagram.....9

Wiring Diagram.....10

We have checked that the contents of this document correspond to the model described. There may be discrepancies nevertheless, and no guarantee can be given that they are completely identical. The information contained in this document is reviewed regularly and any necessary changes will be included in the next edition. We welcome suggestions for improvement.

Specifications and document subject to change without prior notice.

Information supplied in this manual is copyright. No part of this work may be reproduced or copied in any form or by any means, electronic or mechanical without the express permission of the author / publisher.

Service 0800 782 754
Parts 09 829 0930



Manufactured in New Zealand by Washtech Ltd.
414 Rosebank Road, Avondale, Auckland 1026.
PO BOX 90548, Auckland

Safety Instructions



WARNING

Equipment contains dangerous voltages and can be hazardous if installed or operated incorrectly. non-compliance with warnings or failure to follow the instructions contained in this manual can result in loss of life, severe personal injury or serious damage to property.

Installation

- Use qualified, skilled personnel
- Follow installation instructions
- Connect to correct voltage and supply current
- Provide fully accessible electrical Isolation Switch & water supply valves

Training and Supervision

- Read and understand the Operating instructions and train all staff
- This appliance must not be operated by children or infirm persons
- Machine panels must only be removed by suitably qualified and trained personnel – internal hazards include live electrics and very hot surfaces
- This appliance is not intended for use as a stepladder

Hot Surfaces

- Some surfaces may be hot or very hot

Chemicals

- Commercial dishwashing detergents are hazardous – handle with care
- Read and follow the safety information found on the labels of detergent containers and Material Safety Data Sheets
- Use protective eyewear and clothing if decanting containers

Hot Water

- Do not put hands in wash water which may be over 60°C and contain hazardous caustic detergent
- Rinse water can be over 90°C
- Door safety switches are designed for emergency use only

Cleaning

- Do not hose down the machine or splash water over the exterior
- Watch for broken glass etc when cleaning the inside of the machine

Service/repair

- Under no circumstances the user should attempt to carry out repairs
- All service/repair work must be carried out by qualified personnel only
-

Power Cord Replacement

- If the supply cord is damaged, it must be replaced by the manufacturer or its service agent or a similar qualified person in order to avoid a hazard

Installation Checklist



WARNING

Installer must be suitably qualified and ensure compliance with all codes and standards including AS/NZS3500.1.

Unpack

- Unpack the machine, check for damage and complete delivery.

Positioning

- Place machine on sound waterproof self draining floor and adjust feet to level
- Allow room for adjacent chemical containers

Water

- Flush supply lines before connection
- Connect hose supplied to adjacent accessible isolator valve – 20 mm 3/4 male
- Flow rate required – 20 litres per minute
- Temperature – 65°C
- Consumption per cycle – 2.6 litres
- Pressure required – 200-350 kPa – fit limiter above this pressure
- Back Flow – Atmospheric Vacuum Breaker
- Potable water quality is required – filter or soften if necessary

Power

- Machine shipped with cordset for 15 A 230V 50Hz via adjacent switched outlet.
- Easily upgradeable to single phase 25 A 230V 50Hz or three phase 15 A per phase 400V 50Hz

Waste

- Connect drain pump hose supplied to upstand or sink waste connection

Detergent

- Note that detergent is hazardous – read instructions and handle with care
- Insert hose into container of commercial dishwasher low foam detergent
- Pump will prime as machine fills and then come up to strength with use

Rinse Fluid

- Insert hose into adjacent container of commercial dishwasher rinse fluid
- Injector accessible via front panel – increase consumption by winding adjuster screw out

Operation

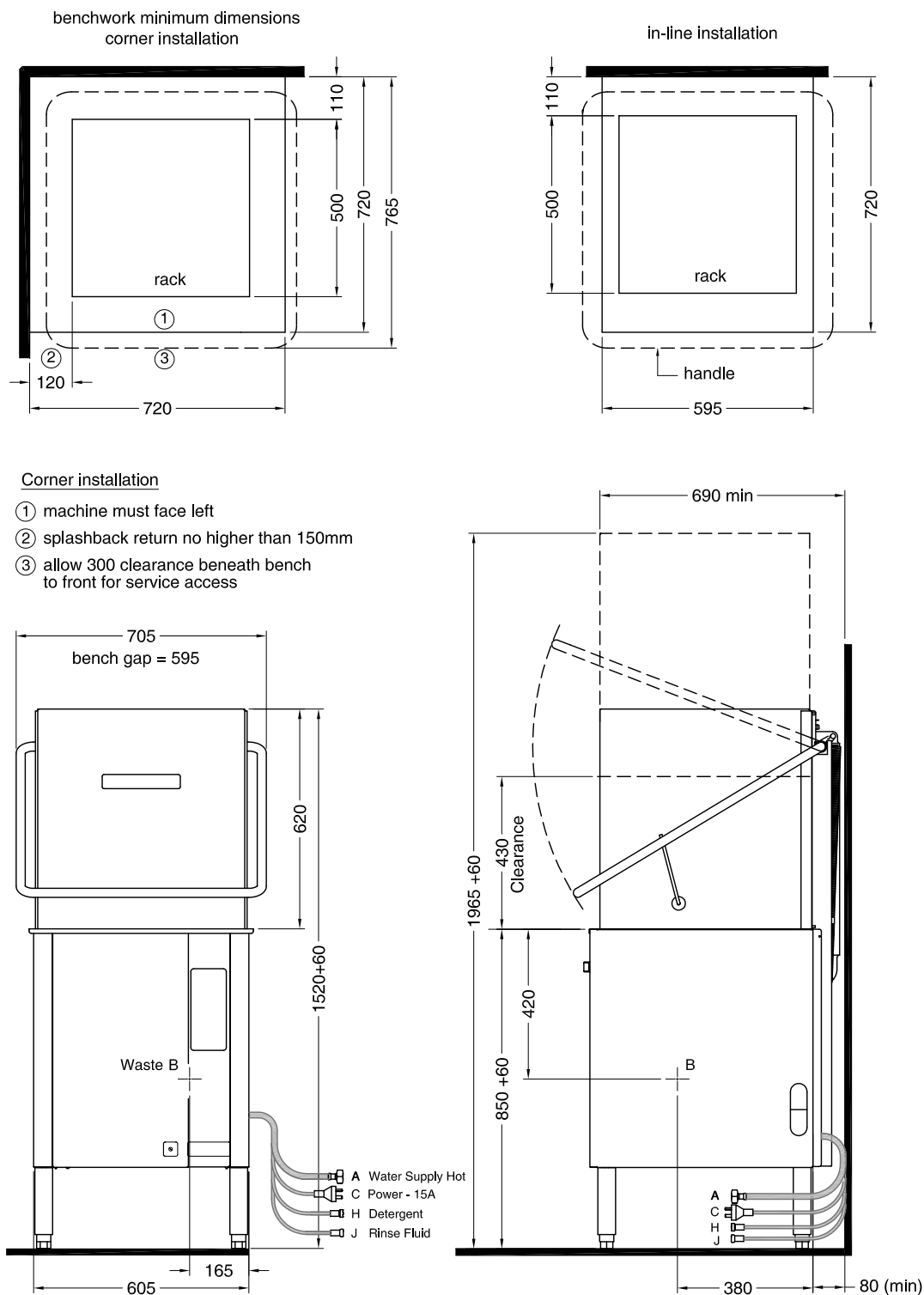
- Run several cycles, ensure that operator has read and understands instructions

Troubleshooting Installation

- If machine doesn't fill after switching on power, check & ensure that hot water supply tap is open, water supply pressure is not below specification.

XP Installation Diagram

XP-S INST 10-12-14 3 B



The diagram shows a vertical control panel with a dark blue background. At the top is a circular selector switch with four positions labeled I, II, III, and a top position with a small circle. Below the switch are two circular lights: a green one on the left and a red one on the right. Further down are two orange circular lights, each with a checkmark icon above it. At the bottom are two rectangular digital displays, each showing '30' and '51' with a temperature symbol. To the right of the panel, there are labels for the lights and gauges: 'Cycle Light', 'Power On Light', 'Rinse Ready Light', and 'Wash Ready Light'. To the left, there are labels for the selector switch and the two ready lights: 'Selector Switch', 'Rinse Ready Light', and 'Wash Ready Light'.

Selector Switch

Cycle Light

Power On Light

Rinse Ready Light

Rinse Temp Gauge

Wash Ready Light

Wash Temp Gauge

Fit drain upstand, wash pump filter, scrap tray and shut door.
Turn wall power switch on and select any cycle (1, 2 or 3).
Power light glows red and machine fills automatically.
Wash Ready light (water symbol) glows amber when wash tank is ready.
Rinse Ready light (tick symbol) glows amber when the machine is up to required temperature.

Select required cycle (1, 2 or 3 for 1, 2 or 3 minute cycle accordingly).
Try cycle 3 initially and switch to faster cycles only if necessary.
Load rack into machine and close door to start the machine.
Cycle light glows green while machine operates.
When Cycle light goes out, cycle is complete.

NOTE 2: After removing rack from machine, DO NOT shut door as machine will start up again

Turn machine and wall power switches off.
Remove drain upstand to drain wash tank.
Remove scrap tray and wash pump filter and rinse clean.
Replace drain upstand, filter and scrap tray.

At the end of the cycle promptly remove the machine - leave the rack on the belt for emptying. This time will be reduced by the use of a detergent (rinse fluid) which reduces viscosity of water to drain quickly from wash nozzles and injectors refer to your chemical supplier for details.

STAR



STARLINE®

Procedures

by Food Hygiene Regulations. The
warm water with a Fisher
y scraping or dunking in water.

arm water, preferably containing
er your chemical supplier.

containers, minimise the overlap
d, handles down.

onsumption per cycle low – so
ng racks.

rgent is essential for good results.
regularly check containers. Discuss
y pre soak solution with your
centration can be changed by
(manual). Rinse Fluid is factory
l take many cycles to prime. The
justing screw on the front cover

ers do not have a drying cycle.
t high temperatures which
when drying agents are used.

remove the rack from the
ench for 2 to 3 minutes before
ed with correct use of drying
water surface tension and allows
ware. For advice on drying agents
al supplier.

STARLINE®

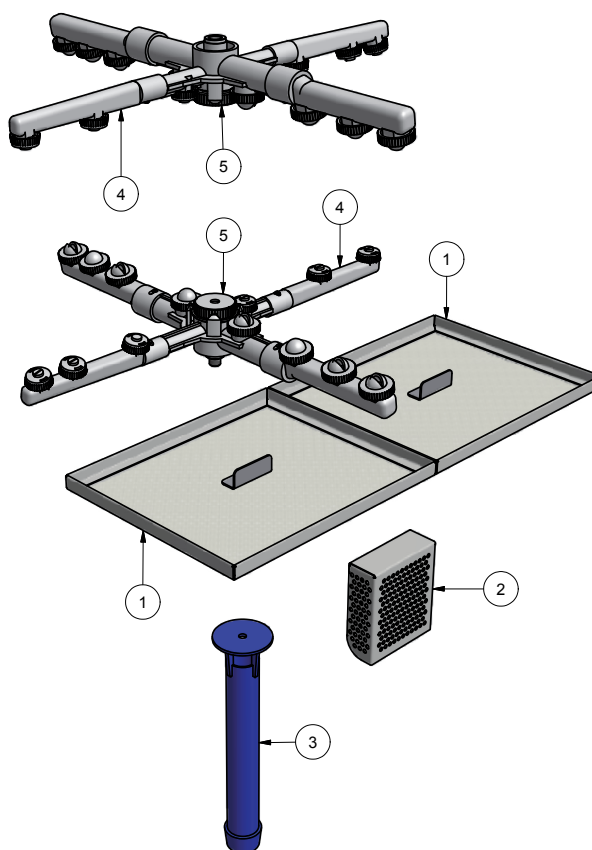
Care

DAILY CLEANING

It is essential that the machine is drained and cleaned at the end of each day. Drain the machine as per the shut down instructions. Remove, clean and replace filters. Regularly check the wash and rinse jets and clean if necessary – see below

REGULAR CLEANING – at least once a week

Remove scrap trays 1. Remove filter 2 and upstand 3. Remove wash and rinse arms 4 by undoing the central thumbscrews 5. Inspect all jets – use toothpick or paperclip and remove jets if necessary to flush and clear. Clean and then replace all items.



MAINTENANCE

Regular servicing of the dishwasher is essential for high performance, efficient operation and long machine life.

Contact us for information on maintenance contracts.

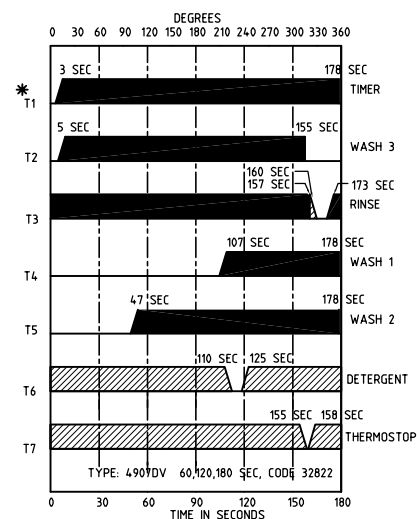
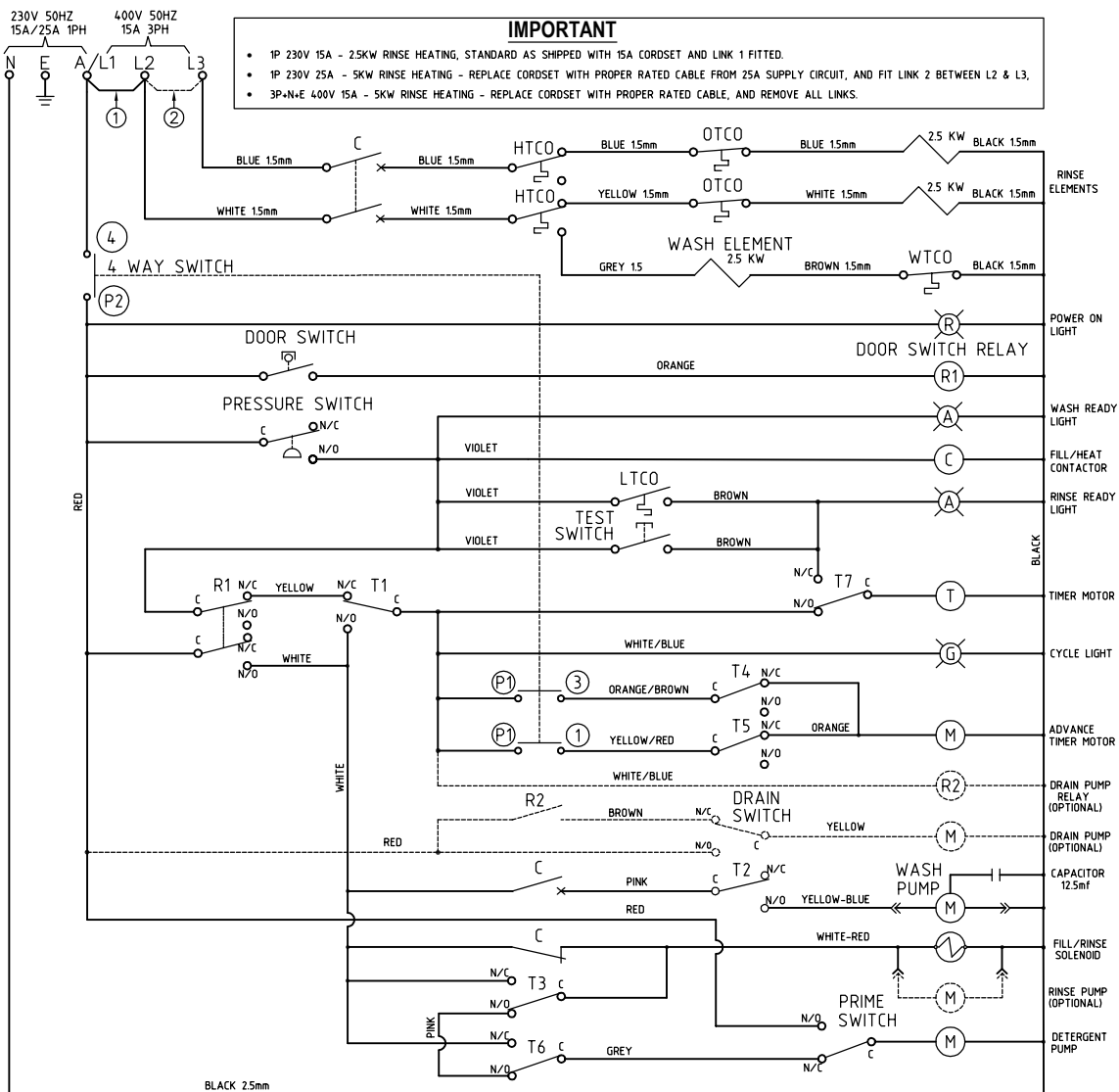
Manufactured in New Zealand by Washtech Ltd.
414 Rosebank Road, Avondale, Auckland 1026
Tel (09) 829 0930 | Fax (09) 828 9351
Web www.starline.co.nz

Troubleshooting

Fault	Cause	Remedy
Filling		
Not filling	Water supply valve shut	Check Water supply valve
	Door Switch not operating	Check Door is closed
Filling during wash cycle	Upstand not fitted properly	Check Drain upstand is fitted
Heating		
Dishes not hot enough	Machine not rinsing	Check water supply temperature
	Rinsing but not hot	Check water supply temperature & arms spinning freely
Cycle start		
Does not start	Door switch	Check door is closed
Cycle Finish		
Wash too long	Water supply cold	Check water temperature
Performance		
Poor wash result	Detergent not used	Use quality low foam product
	Overloading racks	Do not overload racks
	Not pre-rinsing	Use Fisher pre-rinse
	Wash arms not rotating	Remove and clean arms/check bushes
	Wash jets blocked	Remove arms and clean jets
	Excessive soiling	Pre-rinse/use long cycle
	Unrealistic expectation	E.g. baked on soiling requires pre-soaking
Poor rinse results	Rinse jets blocked	Remove arms and clean jets
	Rinse arms not turning	Remove arms, clean jets, check bushes
	Poor racking procedures	Do not overload racks
	Excessive wash tank soil build up	Pre-rinse, change wash water regularly
Not drying	Poor wash/rinse performance	Refer above
	Low temperatures	Check heating systems
	Drying agent not used	Use quality drying agent/rinse fluid
Foaming Wash	Excessive Rinse Fluid	Adjust Rinse Fluid Injector

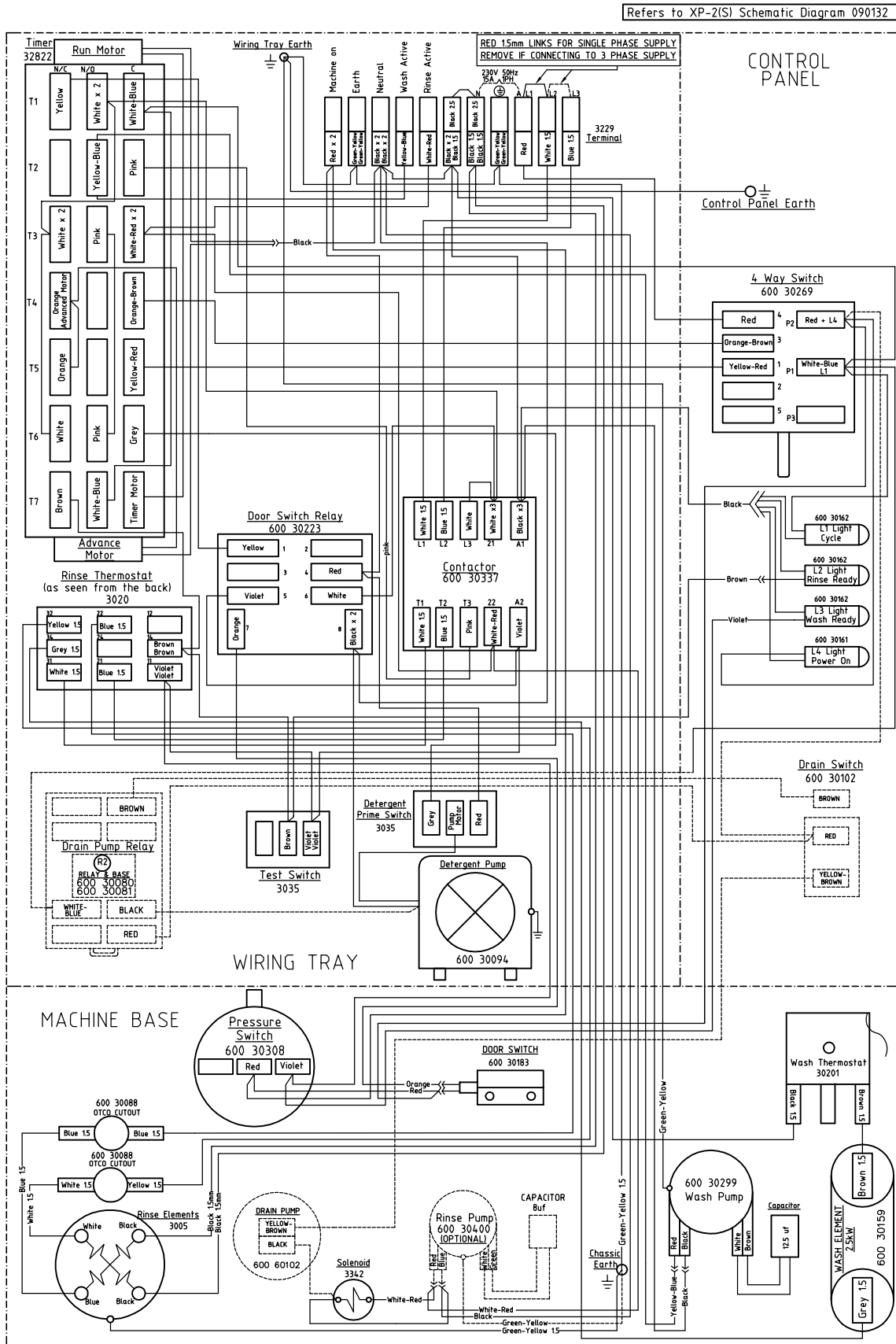
XP Schematic Diagram

090132 19/01/15 1B



XP Wiring Diagram

130206 19/01/15 1B



Accessories

	Code	Description
	600 70029	Cuprack 500mm
	600 70028	Dishrack 500mm
	C660503	G Cutlery Container

Information supplied in this manual is copyright.
No part of this work may be reproduced or copied
in any form or by any means, electronic or
mechanical without the express permission of the
author/publisher

Manufactured in New Zealand by Washtech Ltd.

WASHTECH®

414 Rosebank Road
Avondale
Auckland 1026
New Zealand

PO Box 90548, Auckland

24HR Service 0800 Starline

Tel 09 829 0930

Fax 09 829 0935

E-mail info@washtech.co.nz

web www.starline.co.nz

ISO9001

All Washtech products are designed and
manufactured by Washtech using the
internationally recognised ISO9001 quality
management system, covering design,
manufacture and final inspection, ensuring
consistent high quality at all times.

In line with policy to continually develop and
improve its products, Washtech Ltd reserves the
right to change specifications and design without
prior notice.

